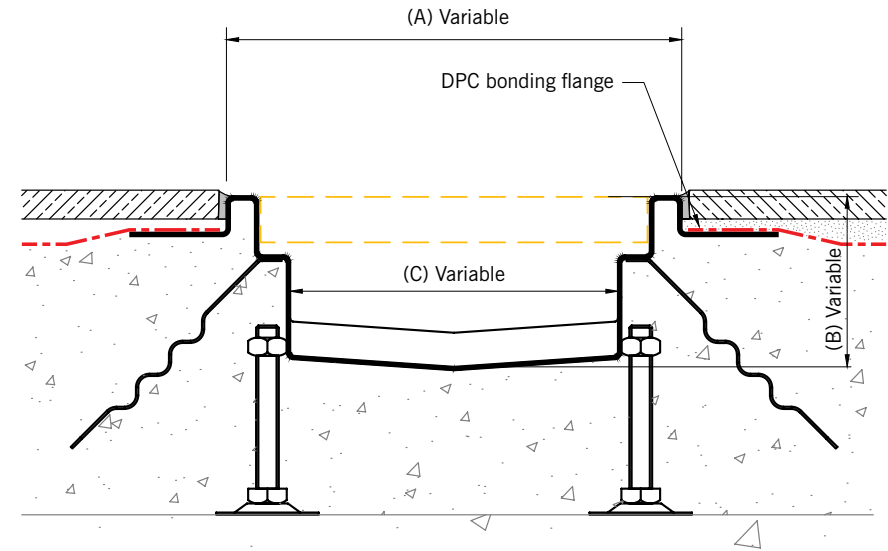


ACO AS101 DPC Channel



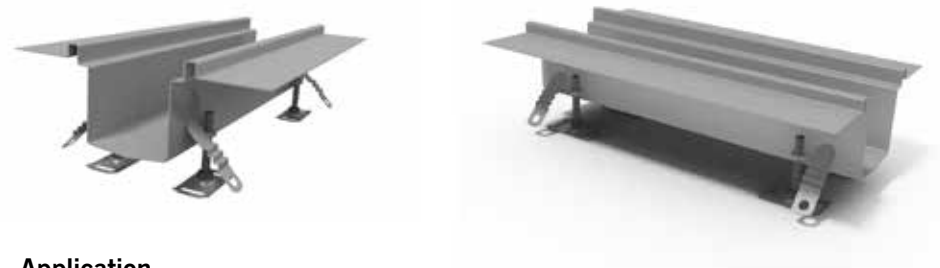
Floor finishes are indicative
Dimensions are all variable to meet your specification

Specification

- Provides flange to seal to DPC
- Can accommodate standard grates
- Can be modelled hydraulically to confirm flow capacities
- Grades 304 or 316

What we want to know...

- What the sub-base is and the floor build ups (provide a section)
- Amount of water to be drained/+area to be drained and rainfall intensity
- Discharging into foul or storm
- Position and number of outlets (provide a plan detail)
- Outlet connection diameter
- Whether any caustic solutions are to be drained (chlorinated water, acids, alkalis)



Application



Load Classes



Length
Width (A)
Depth (B)
Bore (C)
Load class
Grate type