



## ACO Easyline H50

### DATA SHEET

ACO Easyline is ideal for installations requiring a low profile and draining a smaller surface area, for example balconies, terraces, facades and thresholds.

The lightweight plastic channel eases installation, along with its inbuilt 90-degree corner option. The range of accessories allow for rainwater to be drained from the end, sides or underneath of the channel.

ACO Easyline is available in a black channel and matching grating or with a galvanised steel grating and is the ideal choice for domestic use, adding both function and style to your outdoor space.

ACO Easyline's low profile enables installation where depth is at a premium, but care should be taken to check the channel can adequately drain the paved surface.\*

### Benefits

- Ideal for domestic installations where a low profile channel is required such as balconies, facades and thresholds
- Quick and easy to install, including interlocking joints between channels for straight-run and right-angle installation
- Full range of accessories to facilitate end, side and underneath connection to surface water drainage
- Fully certified to Load Class A 15 BS EN 1433:2002



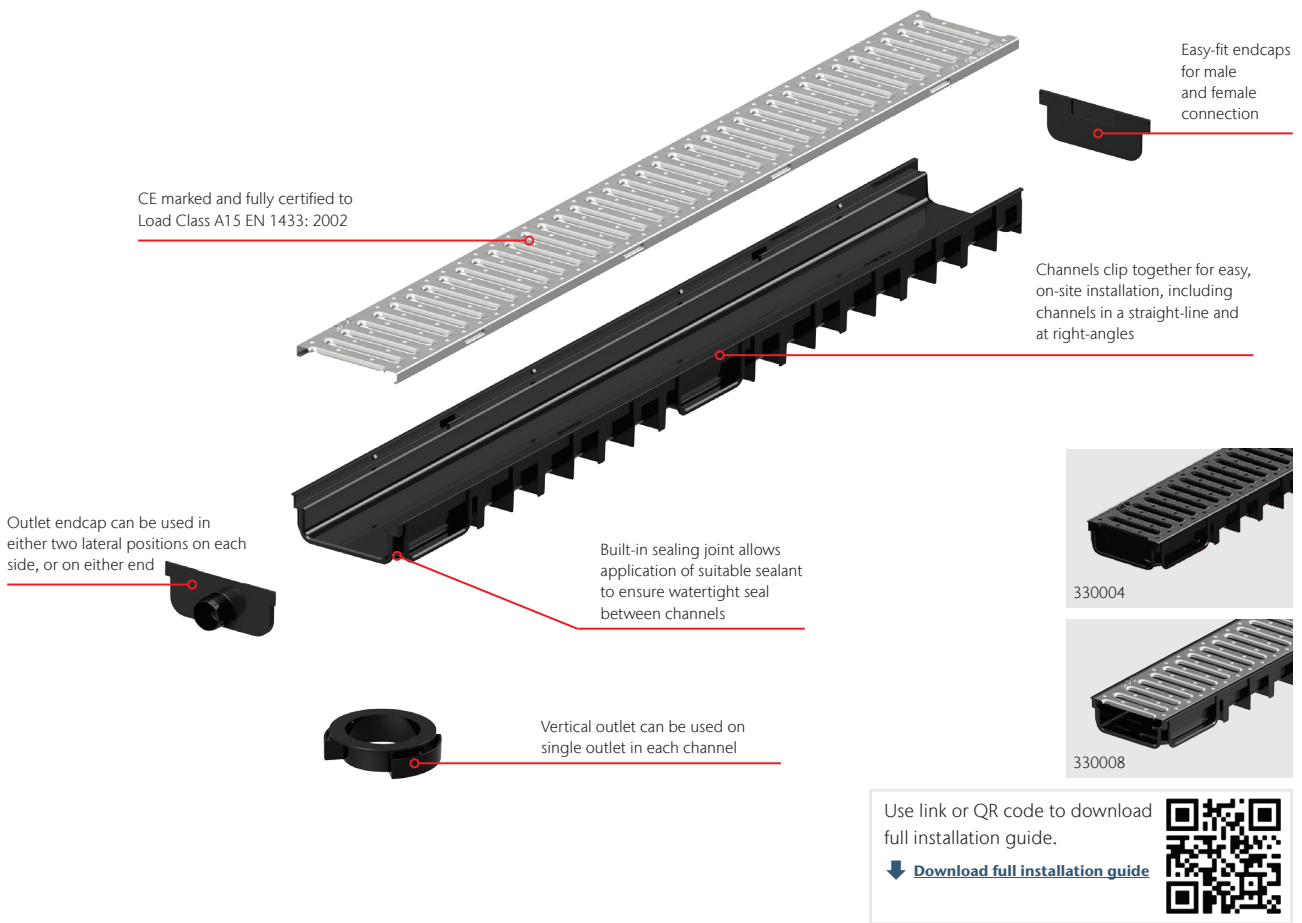
ACO Easyline H50

### Applications

- To drain surfaces used by pedestrians and bicycles
- Ideal solution for where a shallow depth channel is required e.g. balconies, facades and thresholds

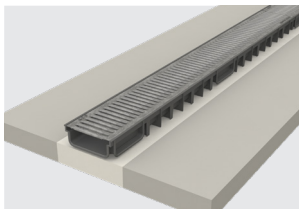
\* A 5m run of Easyline A50 channel with a single outlet will drain up to 35m<sup>2</sup> paved area during a 50mm per hour rainfall event (in accordance with the guidance in Building Regulations for England 2015 Section H3 2.4).

# ACO Easyline H50 System Overview

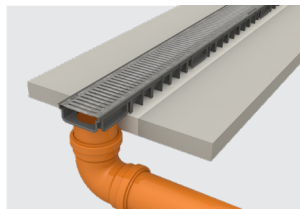


Product Code	Description	Length [mm]	Width [mm]	Overall Depth [mm]	Invert [mm]	Weight [kg]
<b>ACO Easyline H50</b>						
330004	Easyline H50 black channel assembly c/w black plastic grating 1000mm A 15	1000	125	50	40	1.1
330008	Easyline H50 black channel assembly c/w galvanized steel grating 1000mm A 15	1000	125	50	40	1.61
<b>ACO Easyline H50 Accessories</b>						
330020	Easyline H50 accessory kit black (vertical outlet adapter Ø110, 2 end-caps Ø32 outlet, closed end cap)					

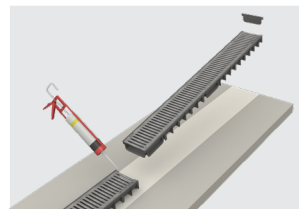
## ACO Easyline H50 Installation



**STEP 1**  
Allow a recess 175mm wide by 100mm deep for channel. Mark finishing height with fixed line 3-6mm below final surface. Lay 50mm (min.) bed of concrete.



**STEP 2**  
Lay first channel with grating fitted in the recess and connect to onward drainage pipework using either vertical outlet adapter Ø110mm or Ø32mm outlet, removing appropriate knockout.



**STEP 3**  
Lay subsequent channels with gratings fitted, following fixed line. Use sealant to seal joints between channels and when attaching outlet and sealing accessories. Seal channel with endcaps.



**STEP 4**  
Use a polymer modified mortar to haunch in the channel and lay the paving material either side of the channel, ensuring the channel's edge rail is 3-6mm below the paving material.

### ACO Water Management Contacts:

Sales: customersupport@aco.co.uk

Technical: technical@aco.co.uk

Tel: 01462 816666

[www.aco.co.uk](http://www.aco.co.uk)

ACO. we care for water

