



ACO. creating  
the future of drainage

## ACO Heelguard™ 6mm Rail Intercept grate

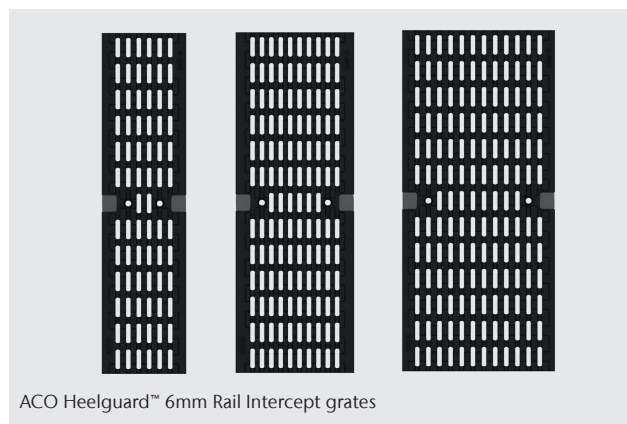
ACO's new Heelguard™ 6mm Rail Intercept grate is specifically designed to meet the needs of the rail industry.

This range of D 400\* Load Class grates meets inlet requirements and skid and slip performance. Combined with ACO's wide range of V-shaped and shallow channels, it gives flexibility to design high performance drainage systems in areas with constrained installation depths.

Designed to meet the requirements of rail platforms and rail building curtilage, these grates are compatible with MultiDrain®, MultiDrain® Sealin and MultiDrain® PPD channels. They feature 6mm width slots and have very high skid and slip resistance. Each grate is fitted with ACO's barless Drainlock™, which improves hydraulic capacity. They are also compatible with ACO's security locking bars for added protection in high theft/vandalism areas.

### Benefits

- Meets high skid and slip requirements
- Meets inlet requirements - 6mm width slots
- Quick and easy to install locked grates
- Strong and durable ductile iron



ACO Heelguard™ 6mm Rail Intercept grates

### Applications

- Rail platforms and rail building curtilage
- Other D 400\* Load Class drainage installations

\* Not suitable for carriageways of public roads or motorways

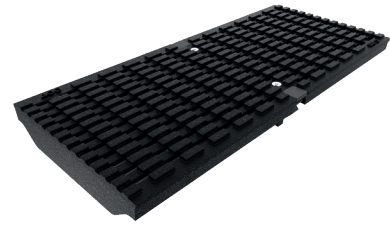
## System Overview



M100D/PPD Heelguard™  
6mm Rail Intercept grate



M150D/PPD Heelguard™  
6mm Rail Intercept grate



M200D/PPD Heelguard™  
6mm Rail Intercept grate

Product Code	Description	Length mm	Width Overall mm	Depth Overall mm	Slot Width mm	Heelguard™	Intake area mm <sup>2</sup> /m	Weight kg
<b>Heelguard™ 6mm Rail Intercept grates</b>								
23511	M100D/PPD Heelguard™ 6mm Rail Intercept, ductile iron grate	500	123	21	6	Yes	23600	4
23516	M150D/PPD Heelguard™ 6mm Rail Intercept, ductile iron grate	500	173	36	6	Yes	41200	6.6
23521	M200D/PPD Heelguard™ 6mm Rail Intercept, ductile iron grate	500	223	43	6	Yes	49800	9.5
<b>Grating accessories</b>								
23415	Drainlock™ security locking assembly, for use with 23511	96	20	13	-	-	-	0.1
23165	Drainlock™ security locking assembly for use with 23516	146	20	13	-	-	-	0.1
23225	Drainlock™ security locking assembly for use with 23521	195	20	13	-	-	-	0.1
23416	Drainlock™ security key							
1367	Drainlock™ grating lifting tool							

## Typical Specification Clause

The channels grate shall be ACO's Heelguard™ 6mm Rail Intercept grate, compatible with M100/M150/M200 (delete as appropriate) MultiDrain® MD/PPD/Sealin channels supplied by ACO Water Management. The grate shall be fully CE and UKCA marked and fully compliant to Load

Class D 400\* as defined in BS EN 1433:2002. The grate shall have inlets of 6mm and skid and slip results 45 and above on 4S pendulum test. It shall also have Drainlock™ locking mechanism and the ability for secondary locking.

Excellent skid and slip results 45 and above on 4S pendulum test

Slot width 6mm on all three sized grates

Durable ductile iron, certified to D 400\* Load Class, BS EN 1433:2002

CE and UKCA marked

Drainlock™ barless locking and optional secondary locking for areas of theft or vandalism (image shows locking bar installed)

Anti shunt feature holds grating securely in place

ACO Drainlock™ gratings - this barless locking device improves hydraulic capacity and provides for quick and simple installation of gratings

Each grate is compatible with secondary locking for areas of theft or vandalism

\* Not suitable for carriageways of public roads or motorways

### ACO Water Management Contacts:

Sales: customersupport@aco.co.uk

Technical: technical@aco.co.uk

Tel: 01462 816666

www.aco.co.uk

ACO. creating  
the future of drainage

